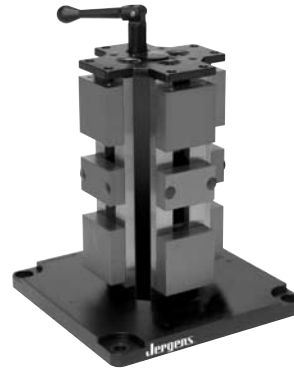


## Horizontal Machine Solutions



### 3-Sided Production Vise Columns Pages 2.17; 2.19

For machining 3 faces of production parts on HMC's. Large spindle noses can access the workpiece. **Allows for up to 240° workpiece accessibility.**



### 4-Sided Production Vise Columns Pages 2.16; 2.18

Available with bases to fit directly onto machine table pallets or to a Ball Lock™ sub-plate.



### 6-Sided Production Vise Columns Page 2.20

Increase the number of parts per load, while maintaining a small footprint. Available with bases to fit directly onto machine tables or to a Ball Lock™ sub-plate.



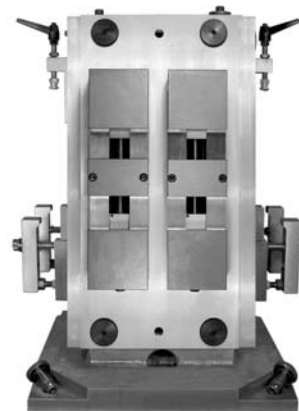
### 4-Sided Production Vise Multi-Columns Pages 2.21 & 2.22

Multiple columns mounted on a single base provide 12 or 16 workstations. Available with bases to fit directly onto your machine table or to a Ball Lock™ sub-plate.



### Hydraulic Vise Columns Pages 2.27-2.33

Innovative compact design. Reduced set-up times, faster workpiece change overs.



### Multi-Vise Fixtures Pages 2.9; 2.11; 2.13; 2.15; 2.25

To maximize productivity, mount multiple narrow body vises onto a single fixture plate. Mount the fixture plate onto the tombstones with the Jergens Ball Lock™ Mounting System.