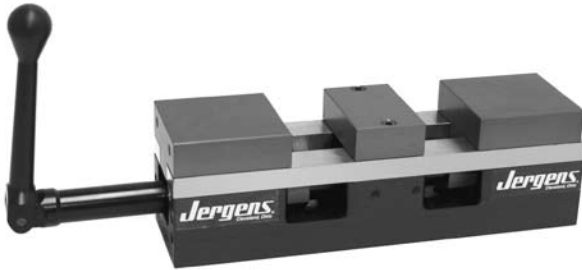


Vertical Machine Solutions



Narrow Base Production Vises
Pages 2.9; 2.11

The small footprint allows maximum density of vises on your fixture or table. Best choice for applications where parts are held in multiple vises.



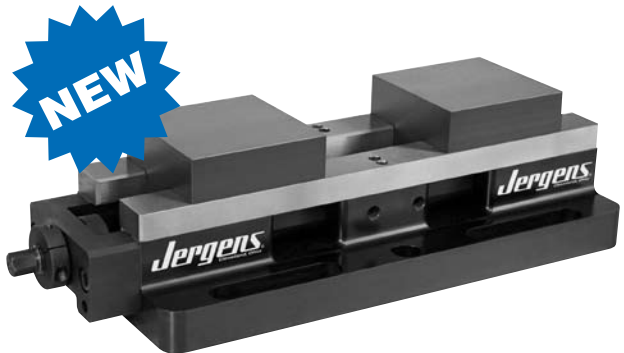
Ball Lock™ Base Production Vises
Pages 2.8; 2.10

The mounting flange is cut into a jigsaw pattern to allow vises to nest closely together. Designed for use with Jergens Ball Lock™ Mounting System.



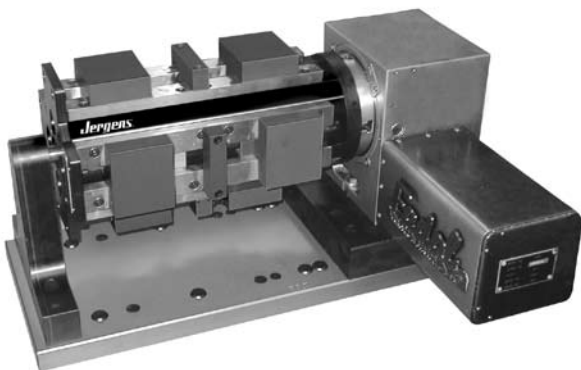
Universal Base Production Vises
Pages 2.9; 2.11

The mounting flange has slotted holes to allow mounting on any machine table.



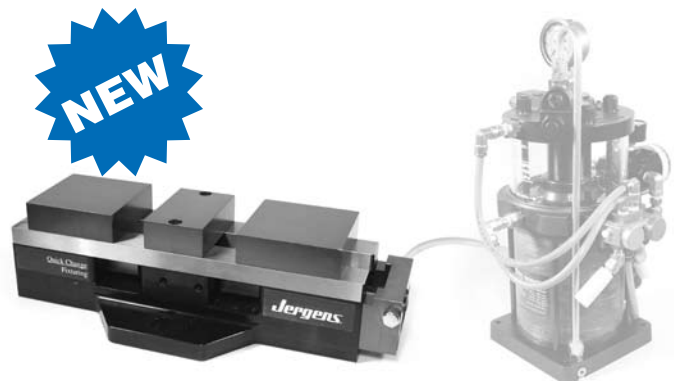
Self Centering Vises (3 Base Styles)
Pages 2.12-2.15

Self-Centering vises provide quick, simple fixturing for concentric machining of different sized workpieces.



Indexer Systems
Page 2.17

Indexer solutions can be customized to your requirements. Choose either three or four sided columns.



Hydraulic Vise
Pages 2.24-2.26

Innovative compact design. Reduced set-up time. Internal Slide Assembly with Hydraulic Clamping Cylinder.