

THE *Jergens*® DIFFERENCE

Jergens® Rod Ends



OURS

Constructed from high-grade alloy steel forgings.

Heat treated to a minimum tensile strength of 150,000 psi.

THEIRS

Made from carbon steel.

Tensile strengths are typically significantly lower.

JERGENS ROD ENDS

Quick turnaround on specials. Blanks are in stock and ready to be made into your custom parts.

Alloy steel forgings are precision machined for better performance.

There are no quantity minimums for standard products.

Jergens maintains a large stock of standard product, ready to ship.

VS.

OTHER MANUFACTURERS' ROD ENDS

Most manufacturers – and virtually no importers – stock blanks, relying on stock items only. Difficult to match Jergens' delivery and turnaround times.

Many competitors use lower-grade material and may not heat treat their parts.

Quite often, production run quantities are required.

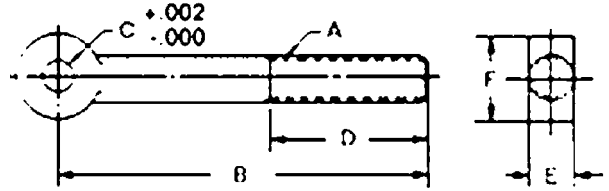
Parts are built only when an order is placed, increasing lead times.

Jergens®

The Standard Components with the Highest Standards™

15700 Waterloo Road • Cleveland, OH 44110 • 800.537.4367 • www.jergensinc.com

Rod Ends are forged and finished for applications not requiring flat contact with the head. All holes are reamed. Rod Ends can be used with spherical flange assemblies, flange nuts and clamp assemblies.



- Material: Alloy Steel
- Finish: Black Oxide
- Heat Treat: 32-36 Rc
- Thread: Class 2A-UNC
- 150,000 PSI Tensile
- Available in FixturePro™ Design Software and PartSpec CD

Rod Ends

Part Number	Thread Size	A	B	C	D	E	F	Material
35301	1/4-20	2	3/16	3/4	1/4	1/2	Steel	
35302	1/4-20	2	1/4	3/4	1/4	1/2	Steel	
35318	5/16-18	3	1/4	1 1/2	5/16	5/8	Steel	
35319	5/16-18	3	5/16	1 1/2	5/16	5/8	Steel	
35303	3/8-16	3	5/16	1 1/2	3/8	3/4	Steel	
35320	3/8-16	4	5/16	1 3/4	3/8	3/4	Steel	
35304	3/8-16	2 3/16	3/8	1 1/4	3/8	3/4	Steel	
35305	3/8-16	3	3/8	1 1/2	3/8	3/4	Steel	
35306	3/8-16	5	3/8	2 1/2	3/8	3/4	Steel	
35307	1/2-13	3 3/4	3/8	1 1/2	1/2	1	Steel	
35308	1/2-13	2 11/16	1/2	1 1/2	1/2	1	Steel	
35309	1/2-13	3 3/4	1/2	1 1/2	1/2	1	Steel	
35310	1/2-13	5	1/2	1 1/2	1/2	1	Steel	
35311	5/8-11	3 11/16	5/8	2	5/8	1 1/4	Steel	
35312	5/8-11	4 1/2	5/8	2	5/8	1 1/4	Steel	
35314	5/8-11	6	5/8	2 1/2	5/8	1 1/4	Steel	
35315	3/4-10	4 1/2	3/4	2	3/4	1 1/2	Steel	
35321	3/4-10	6	3/4	2 1/2	3/4	1 1/2	Steel	
35317	1-8	8	1	3	1	2	Steel	
35721	1/4-20	2 1/8	3/16	7/8	1/4	1/2	Stainless Steel	
35722	1/4-20	2 1/8	1/4	7/8	1/4	1/2	Stainless Steel	
35723	5/16-18	3 1/2	1/4	1 1/2	5/16	5/8	Stainless Steel	
35724	5/16-18	3 1/2	5/16	1 1/2	5/16	5/8	Stainless Steel	
35725	3/8-16	3 1/2	3/8	1 1/2	3/8	3/4	Stainless Steel	
35726	3/8-16	5	3/8	2 1/2	3/8	3/4	Stainless Steel	
35727	1/2-13	3 3/4	1/2	1 1/2	1/2	1	Stainless Steel	
35728	1/2-13	5	1/2	2	1/2	1	Stainless Steel	
35729	5/8-11	4 1/2	5/8	2	5/8	1 1/4	Stainless Steel	
35730	5/8-11	6	5/8	3	5/8	1 1/4	Stainless Steel	
35731	3/4-10	4 1/2	3/4	2	3/4	1 1/2	Stainless Steel	
35732	3/4-10	6	3/4	2 1/2	3/4	1 1/2	Stainless Steel	

Blank Rod Ends

Part Number	A	B	E	F	Material
35511	1/4	2	1/4	1/2	Steel
35512	3/8	5	3/8	3/4	Steel
35513	1/2	6	1/2	1	Steel
35514	5/8	6	5/8	1 1/4	Steel
35515	3/4	6	3/4	1 1/2	Steel
35516	1	8	1	2	Steel
35701	1/4	2	1/4	1/2	Stainless Steel
35702	3/8	5	3/8	3/4	Stainless Steel
35703	1/2	6	1/2	1	Stainless Steel
35704	5/8	6	5/8	1 1/4	Stainless Steel



The Standard Components with the Highest Standards™

www.jergensinc.com

Jergens Way • 15700 S. Waterloo Road • Cleveland, OH 44110-3898 •

USA (800) 537-4367 • (216) 486-5540 • Fax (216) 481-6193

E-Mail: info@jergensinc.com