

## Shackle-Lok™ Shackle-Style Hoist Rings



### **Shackle-Lok™** SHACKLE-STYLE HOIST RINGS

Shackle-Lok™ combines the strength of a hoist ring with the versatility of a shackle. Its unique, 3-piece design is ideal for use with a variety of lift methods, and shackles are interchangeable. Shackle-Lok™ is simply the industry's most efficient below-the-hook lifting device from a weight to load rating ratio.

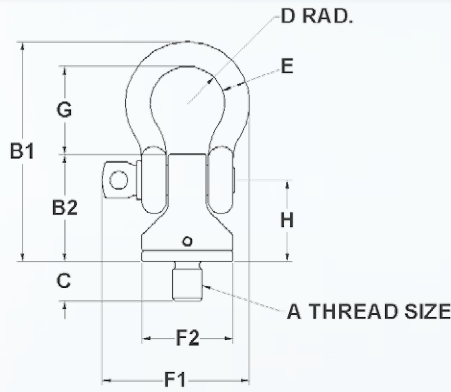
#### Features & Benefits:

- Internal ball bearings allow for smooth rotation under load
- Full 360° swivel and 180° pivot action
- Easy to remove shackle
- Rated 5:1 strength factor in vertical pull
- Material: alloy steel
- Bolt and base finish: black oxide
- Bolt and base are magnetic particle inspected
- Shackle finish: zinc plated with gold colored conversion coating
- Proof tested to 200% of rated load capacity
- Certificate of proof test provided
- 3D Solid models available in multiple formats from [www.jergensinc.com](http://www.jergensinc.com)

#### Conforms to:

- ASME B30.26
- CE certified
- RR-C-271F





# Shackle-Lok™

## SHACKLE-STYLE HOIST RINGS

The Shackle-Lok™ was designed to work with numerous thread sizes. Any straight thread size, pitch, or length can be manufactured to meet application needs.

**Note:** When tightening the bolt, the shackle and pin must be removed. Not intended for prolonged rotation

Part Number		Thread Size A	Load <sup>1</sup> Capacity (lbs)	Length		Thread Length C	Inside Shackle Radius D	Shackle Diameter Size E	Width		Inside Shackle Clearance G	Pin Hole to Base H	Torque <sup>2</sup> (lbs*ft)	Weight		Hex size
With Shackle	No Shackle			With Shackle B1	No Shackle B2				With Shackle F1	No Shackle F2				With Shackle	No Shackle	
24400	24400NS	1/4-20	550	2.48	1.23	1/2	.38	1/4	1.57	.94	1.0	.95	3	0.26	0.15	5/32
24401	24401NS	5/16-18	800	2.48	1.23	1/4	.38	1/4	1.57	.94	1.0	.95	5	0.26	0.15	5/32
24402	24402NS	5/16-18	800	2.48	1.23	9/16	.38	1/4	1.57	.94	1.0	.95	5	0.27	0.16	5/32
24403	24403NS	3/8-16	1000	2.48	1.23	9/16	.38	1/4	1.57	.94	1.0	.95	7	0.27	0.16	5/32
24405	24405NS	1/2-13	2500	4.17	1.97	3/4	.71	1/2	2.96	1.50	1.7	1.42	23	1.32	0.62	1/4
24406	24406NS	1/2-13	2500	4.17	1.97	1	.71	1/2	2.96	1.50	1.7	1.42	23	1.34	0.63	1/4
24407	24407NS	1/2-13	2500	4.17	1.97	1 1/16	.71	1/2	2.96	1.50	1.7	1.42	23	1.34	0.64	1/4
24408	24408NS	1/2-13	2500	4.17	1.97	1 1/4	.71	1/2	2.96	1.50	1.7	1.42	23	1.35	0.65	1/4
24409	24409NS	5/8-11	4000	4.17	1.97	3/4	.71	1/2	2.96	1.50	1.7	1.42	46	1.35	0.64	1/4
24410	24410NS	5/8-11	4000	4.17	1.97	1	.71	1/2	2.96	1.50	1.7	1.42	46	1.37	0.66	1/4
24411	24411NS	5/8-11	4000	4.17	1.97	1 1/4	.71	1/2	2.96	1.50	1.7	1.42	46	1.39	0.69	1/4
24412	24412NS	3/4-10	5000	5.56	2.71	1	.94	5/8	3.72	2.30	2.2	2.06	69	3.42	1.98	3/8
24413	24413NS	3/4-10	5000	5.56	2.71	1 1/2	.94	5/8	3.72	2.30	2.2	2.06	69	3.48	2.04	3/8
24414	24414NS	7/8-9	8000	7.25	3.52	1	1.31	7/8	5.63	2.80	2.9	2.62	130	7.66	3.95	7/16
24415	24415NS	7/8-9	8000	7.25	3.52	1 1/4	1.31	7/8	5.63	2.80	2.9	2.62	130	7.70	3.99	7/16
24416	24416NS	1-8	10000	7.25	3.52	1 1/4	1.31	7/8	5.63	2.80	2.9	2.62	185	7.76	4.05	7/16
24417	24417NS	1-8	10000	7.25	3.52	1 1/2	1.31	7/8	5.63	2.80	2.9	2.62	185	7.81	4.10	7/16
24418	24418NS	1-8	10000	7.25	3.52	2 1/4	1.31	7/8	5.63	2.80	2.9	2.62	185	7.98	4.27	7/16
24419	24419NS	1 1/4-7	15000	8.25	3.99	1 7/8	1.38	1	6.08	3.06	3.3	2.94	345	11.3	5.89	1/2
24421	24421NS	1 1/2-6	24000	11.72	5.11	2 1/4	1.88	1 1/2	8.32	4.06	5.1	3.64	660	29.0	12.36	3/4
24424	24424NS	2-4 1/2	30000	11.72	5.11	3 1/8	1.88	1 1/2	8.32	4.06	5.1	3.64	1100	30.6	13.97	3/4
24426	24426NS	2 1/2-4	50000	14.22	6.52	4	2.25	1 3/4	9.57	5.25	6.0	4.47	2300	58.7	28.95	1

<sup>1</sup> Stated load capacity based on recommended thread torques as shown in chart.

<sup>2</sup> It is recommended that these torques be used when installing hoist rings.

Part Number		Thread Size A	Load <sup>1</sup> Capacity (kg)	Length		Thread Length C	Inside Shackle Radius D	Shackle Diameter Size E	Width		Inside Shackle Clearance G	Pin Hole to Base H	Torque <sup>2</sup> (kg*m)	Weight		Hex size
With Shackle	No Shackle			With Shackle B1	No Shackle B2				With Shackle F1	No Shackle F2				With Shackle	No Shackle	
24450	24450NS	M6 X 1.0	200	63.0	31.2	12	9.5	6.4	39.9	23.9	25	24.1	0.30	0.12	0.07	4
24451	24451NS	M8 X 1.25	400	63.0	31.2	12.5	9.5	6.4	39.9	23.9	25	24.1	0.70	0.12	0.07	4
24452	24452NS	M10 X 1.5	450	63.0	31.2	17.5	9.5	6.4	39.9	23.9	25	24.1	1.0	0.12	0.08	4
24453	24453NS	M12 X 1.75	1050	105.9	50.0	19.5	18	12.7	75.1	38.1	43	36.1	2.8	0.60	0.28	8
24455	24455NS	M16 X 2.0	1900	105.9	50.0	29	18	12.7	75.1	38.1	43	36.1	7.0	0.63	0.31	8
24456	24456NS	M20 X 2.5	2150	141.2	68.8	32	23.8	15.9	94.4	58.4	57	52.3	10.6	1.57	0.92	10
24458	24458NS	M24 X 3.0	4200	184.2	89.4	37	33.4	22.2	143.0	71.1	72	66.5	23	3.52	1.84	12
24459	24459NS	M30 X 3.5	7000	209.6	101.3	46	34.9	25.4	154.3	77.7	83	74.7	50	5.10	2.63	14
24460	24460NS	M30 X 3.5	7000	209.6	101.3	66	34.9	25.4	154.3	77.7	83	74.7	50	5.22	2.74	14
24463	24463NS	M36 X 4.0	11000	297.7	129.8	54	47.8	38.1	211.3	103.1	130	92.5	90	13.07	5.52	19
24465	24465NS	M42 X 4.5	12500	297.7	129.8	68	47.8	38.1	211.3	103.1	130	92.5	120	13.37	5.82	19
24466	24466NS	M48 X 5.0	13500	297.7	129.8	88	47.8	38.1	211.3	103.1	130	92.5	145	13.87	6.32	19
24468	24468NS	M64 X 6.0	22500	361.2	165.6	96	57.2	44.5	243.0	133.4	151	113.5	320	26.4	13.04	24

All dimensions are in millimeters.

<sup>1</sup> Stated load capacity based on recommended thread torques as shown in chart.

<sup>2</sup> It is recommended that these torques be used when installing hoist rings.

### WORLD HEADQUARTERS

15700 S. Waterloo Road. Cleveland, OH 44110-3898

☎ 877.440.LIFT (5438)

✉ [lifting@jergensinc.com](mailto:lifting@jergensinc.com)

🌐 [www.jergensinc.com/lifting](http://www.jergensinc.com/lifting)

AD1211

© Copyright Jergens, Inc. 2011